

Bulwell Forest

Area Committee Executive Summary

Unofficial December 2012 Data

Bulwell Forest - Ward Priorities

Theme	Priorities	Key Actions	Outcome	Lead
Safer	Criminal Damage to Rise Park Community Centre(LAG Priority)	Undercover operations will take place to try and catch the culprits	Regular patrols have taken place but there have been no acts of criminal damage sited.	Police
		Police will investigate the possibility of installing temporary CCTV within the centre	Insufficient crimes have been reported to enable CCTV to be installed via the police.	Police
		Neighbourhood Management will liaise with the maintenance team regarding the possibility of antivandal paint, more substantial support for the handrail and the air vent	The air vents have been repaired and NCC is looking at other options to protect the building but no further damage has been reported. Steps have been taken to make it more difficult for young people to get onto the roof.	NM
	Safety Concerns regarding cyclists riding without lights in the dark and irresponsible cycling on pavements	The safer neighbourhoods team will check whether cycling safety talks/events are held at Bulwell and Top Valley Academies. They will also talk to young people at the BMX track	Bulwell Academy and Top Valley Academy do not currently run cycling safety events. The possibility of running sessions is being considered	Police

	(LAG Priority)	and skatepark.		
		Chris will check the legislation regarding cycling without lights after dark	There is legislation in place regarding lack of lights on bikes in the dark. The police will warn young people of this.	Police
		The safer neighbourhoods team will talk to young people on bikes to find out whether they would use lights or fluorescent clips etc if they were provided with them.	Varied response from young people about the use of lights. PCSO James Fretwell will liaise with local shops to see if any can be provided.	Police
		If young people were prepared to use lights, Celia will investigate possible sources of funding or obtaining them		NM
		The possibility of using publicity material from previous road safety campaigns such as Be Seen Be Safe will be investigated	No publicity material regarding lights on bikes appears to be currently available.	NM
	Anti Social Behaviour around Witney Close (police priority)	Increase patrols in the area.		Police
		Use the 5 step antisocial behaviour		Police

		<p>procedure to deal with suspects causing damage and other antisocial behaviour in the area.</p> <p>Feed results back to you on a monthly basis through the police website and neighbourhood alert.</p> <p>An awareness raising campaign will take place which will include information on how to prevent and report nuisance calls eg Telephone Preference Service</p> <p>Investigate national campaigns and websites and assess the benefit of using these within Bulwell Forest Ward</p>		<p>Police</p> <p>NM</p> <p>NM</p>
Neighbourhoods	Increase community engagement from areas not currently represented at community meetings eg LAGs	<p>Beat surgeries will take place around Deptford estate. NM to arrange sessions outside Co-op with councillors and partner agencies in March and June 2013 and outside Tescos in January 2013 (for Southglade Park estate).</p> <p>Promotion of the neighbourhood alert</p>	<p>Dates have been arranged for sessions outside the Co-op on Highbury Rd and a multi agency drop in has been arranged for January 21st at the Top valley Community Centre with 650 flyers distributed.</p> <p>The police have arranged to</p>	<p>NM</p> <p>Police</p> <p>Police</p>

	<p>scheme will take place on the Deptford estate and on Southglade Park estate. Police to arrange in under represented areas in January 2013.</p> <p>Neighbourhood alert forms and a box will alternate between the Ken Martin and Southglade Leisure Centres. Police to arrange.</p> <p>The possibility will be investigated of a neighbourhood alert being sent out prior to a LAG meeting asking residents if there are any issues they would like to raise. Beat managers to action.</p> <p>The Fire Service will investigate the possibility of holding a fire awareness session on Deptford. NM to liaise with the Fire Service.</p> <p>Estate Walks have been arranged In January 2013, community</p>	<p>knock on doors on Jan 26th to increase the take up of community alert.</p> <p>The Fire Service have had few calls from the Deptford estate but are willing to come to a joint community event eg the launching of Latimer Park.</p> <p>Two dates have been arranged in</p>	<p>Police</p> <p>Police</p> <p>Fire</p> <p>NM NM</p>
--	--	--	--

	Reduce the amount of dog fouling in public places	<p>engagement around the Austin St flats to be considered.</p> <p>Libraries, Sports and Leisure, Decade of Better Health and Youth and Play to investigate the number of people from Deptford estate and the Cowlairs estate who are using existing services.</p> <p>Nottingham City Homes will take tenancy action where appropriate</p> <p>Community Protection will issue fines, carry out undercover operations and carry out stencilling on pavements</p> <p>Posters will be put up in areas where someone has been fined</p>	<p>2013 for councillors and officers to walk around the flats following publicity.</p> <p>Statistics from the Library Service and the childrens centre show that residents from the Deptford estate are registered with, and use, both of these services.</p> <p>NCH has written to two residents regarding dog fouling issues.</p> <p>6 covert operations have taken place within Bulwell Forest Ward since April 2012 with smaller operations carried out on Top Valley. Stencilling has been carried out on pavements. The CCTV vehicle has also been used</p> <p>Letter drops have been carried out close to where prosecutions have taken place.</p>	<p>NM</p> <p>NCH</p> <p>CP</p> <p>CP</p>
--	---	--	---	--

		Free bags will be distributed by residents and officers to dog walkers	Bags have been given to community reps and venues for them to be handed out to dog walkers. Targetted use of Fido and Poover from City Services has helped to keep the area clean	NM
		A leaflet drop raising awareness will take place to 1000 homes		NM/CP
	Efficient delivery of approved ward projects	Monitoring of projects within the ward to enable early identification of ways to reduce potential delays.		NM
		Ensure that timetabled play and youth sessions are delivered at the times advertised.		F&C
Families	Domestic Abuse	Nottingham City Homes will take action wherever domestic abuse is reported or suspected		NCH
		The police will continue to respond to domestic abuse incidents		Police
		The Fire Service will fit alarms where		Fire

		<p>this is risk of fire as a result of domestic abuse</p> <p>Information about where help is available will be promoted in Leisure Centres and other public buildings</p> <p>Action will be taken to raise alcohol awareness through the health priorities</p> <p>The possibility of obtaining goods with the helpline number on will be investigated.</p> <p>The possibility of involving Notts Domestic Violence Forum in work with young people will be investigated.</p>	<p>A networking event has been arranged for February to ensure all front line staff are aware of local services and an action plan for the ward will be compiled at this event</p> <p>The ward councillors have agreed to fund any primary school within the ward which has not already benefited from NDVF's Great Project. 4 schools have taken advantage of this – this means that all primary schools in the ward will receive, or already have</p>	<p>SLC/ All</p> <p>DOBH</p> <p>NM</p> <p>NM</p>
--	--	--	---	---

		<p>A week of healthy relationships and domestic abuse sessions to be programmed into play and youth provision before financial year end</p> <p>Family and Community Teams to organise additional staff training around the Trilogy of Risk (Domestic Abuse, mental health and substance misuse).</p> <p>Promotion of activities currently available for children, young people and families will take place.</p> <p>Mapping of the activities currently taking place in the ward outlining current services. This will be used to identify gaps and promote activities.</p>	<p>received the project.</p> <p>Forms have been sent out to all local organisations asking for information on youth and play activities.</p>	<p>F&C</p> <p>F&C</p> <p>F&C</p> <p>NM/ F&C/ Toy Libr.</p> <p>F&C</p>
	<p>Lack of awareness about opportunities for children, young people and families</p> <p>Supporting targeted family intervention</p>	<p>Family and Community Teams to roll out the Family support pathway with partners including schools, health and</p>		

		police.		
Health	Childhood Obesity and Physical Activity	<p>Families to be signposted to the Go 4 It project held at Leisure Centres.</p> <p>Promotion of activities currently available for children, young people and families will take place.</p>	<p>School Nurses and other health professionals have referred children onto the scheme, referral forms are sent to GP's, Notts County Football in Community staff and Sport & Leisure Staff also promote Go For It at events. 6 people have been referred with 3 of these regularly attending. There is capacity for 15.</p> <p>The Bee Fit scheme which aims to reduce obesity and Coronary vascular disease is promoted within the Leisure Centres, at GP surgeries and also with Notts County. 939 customers are registered at Southglade – this is currently oversubscribed. The Active Families programme currently has between 10 and 15 attendees.</p>	<p>Leisure</p> <p>DoBH/ F&C</p>

		Promotion of local physical activities and weight management programmes through the Decade of Better Health Programme		DoBH
		Family and Community Teams provision of healthy eating programme for parents and children including cook and eat and cook and move programmes		F&C
		Physical activity will be provided at every play and youth sessions delivered by the Family and Community Team		F&C
	Alcohol Awareness	Raising awareness of alcohol consumption to be promoted through the Decade of Better Health Programme and through partnership working with the Last Orders service		DOBH
		Referral to services such as Last Orders by agencies where appropriate		All

	Depression and Anxiety	Support to young people from CAMHS (child and adolescent mental health support) at weekly Riverside health session		F&C
		Mental health awareness training to be delivered via mental health lead as part of the Decade of Better Health programme and promotion of mental health services through DOBH		DoBH
		Ensure key workers are aware of the support agencies and groups and how to refer to them.		DoBH
	Fuel Poverty and lack of awareness about ways of reducing fuel prices	Promotion of schemes such as the warm home discount, tariff switching etc.	Framework attended a NAT meeting to outline the services they provide.	NM
	Halve excess winter deaths through energy efficiency measures and energy advice to vulnerable residents	Decade of Better Health to liaise with public health colleagues.		DOBH
		Nottingham Energy Partnership to run an energy advice session for City services front line staff on energy	Energy advice session booked in for January for all staff at Vernon Rd Depot.	City Serv.

		<p>efficiency</p> <p>Energy efficiency information to be provided at the Employment Training and Volunteering fair to people on low income in January 2013.</p> <p>Information to be obtained on what energy efficiency advice is given to community nurses, meals on wheels staff, adult services teams etc to ensure that vulnerable people are receiving up to date information.</p> <p>Everyone to consider inviting energy conservation advice projects to any local events and to consider referring people to Nottingham City Homes, Age UK or other agencies for individual energy advice where needed.</p>	<p>Nottingham Energy Partnership obtained several referrals at the Employment Fair and gave out energy saving tips to attendees.</p>	<p>NM</p> <p>NM</p> <p>All</p>
--	--	---	--	--------------------------------

Working	Increase awareness about access to employment and training opportunities	<p>Arrange an employment, advice and volunteering fair at Bulwell Riverside at the beginning of 2013.</p> <p>Promote volunteering opportunities as a potential route to volunteering eg through Decade of Better Health</p> <p>Promote existing support services to ensure that anyone looking for work knows of the opportunities available</p>	<p>32 organisations attended this event on 13/1/13. Flyers distributed to every house within Bulwell and Bulwell Forest wards. All organisations will be asked for outcomes of the event 6 weeks afterwards.</p>	<p>NM</p> <p>DoBH</p> <p>All</p>
----------------	--	--	--	----------------------------------

Key

- | | |
|------|---------------------------|
| CP | Community Protection |
| DoBH | Decade of Better Health |
| F&C | Family and Community Team |
| LAG | Local Area Group |
| NM | Neighbourhood Management |
| NCH | Nottingham City Homes |
| SLC | Southglade Leisure Centre |

Community Engagement

November 2012 – January 2013

Ward Walks

Area/ Estate	Date/ Time	Meeting Point
Chatham Court, Highbury Hospital, Palmwood Court	December 12 th 9.30am	Reception areas of all three units.

Community Meetings

Group	Date	Venue
Top Valley Tenants and Residents Association	November 15 th	Top Valley Community Centre
Top Valley Community Association	November 26 th	Top Valley Community Centre
Leen Valley Community Association AGM	December 5 th	Leen Valley Community Centre
St Mary's Church Xmas Fair	December 7th	St Mary's Church, Highbury Rd
Rise Park Action Group	December 13th	Rise Park Community Centre

Fun on the Forest Planning Group	January 8th	United Reform Church
Top Valley Community Association AGM	January 28th	Top Valley Community Centre

Community Engagement

Events and Activities Delivered

Event	Lead Partners	Date/ Time	Venue
Rise Park Dog Fouling Operation	Community Protection and Neighbourhood Management (NM)	November 2 nd	Rise Park
Planting at Southglade Park	Parks and NM	November 8th	Southglade Park
Bestwood and Bulwell Forest Budget Consultation	Ward Members	November 22 nd	Southglade Access Centre
Top Valley Academy bulb planting	NM and City Services	November 27 th 1.45 – 3pm	Top Valley Drive outside School
Bulwell and Bulwell Forest Budget Consultation	Ward Members	November 27 th	Bulwell Market Place

Xmas Lights Switch On	NM	December 3 rd 3.30 – 5pm	Bulwell Market lace
Westglade School Community Bulb Planting	NM and City services	December 5 th 10 - 12	Top Valley Way roundabout
Bulwell Forest South Local Area Group	NM	December 6 th 6pm	St Albans Rd
Employment, Training and volunteering Fair	NM	January 17 th 9.30 – 12.30	Bulwell Riverside
Budget Consultation	Ward Members	January 17 th 7.30pm	Top Valley Community Centre
Welfare reform drop in	NM	January 21 st 3 – 7pm	Top Valley Community Centre
Budget Consultation	Ward Members	January 24 th 1 – 3pm	Southglade Access Centre
Bulwell Forest North Local Area Group	NM	January 24 th 6.30pm	Top Valley Community Centre
Welfare reform – Community rep information session	Neighbourhood Management / Welfare Rights	Tuesday 29 th January 7pm – 8pm	Top Valley Community Centre
Welfare reform – Community rep information session	Neighbourhood Management / Welfare Rights	Wednesday 30 th January 10am – 11am	Riverside centre

Future Events and Activities Planned

February to April 2013

Event	Lead Partners	Date/ Time	Venue
Ward Walk	NM and Ward Members	February 6 th 10am	To be confirmed
Bulwell Forest South Local Area Group	NM	February 7 th 6pm	St Albans Rd
Southglade Have a Go Day	NM, Leisure, Parks	February 19 th 11am – 3pm	Southglade Multi Use Games Area
Friends of Bulwell Forest	NM, Parks	February 26 th 7pm	To be confirmed
Deptford Drop By session	Ward Members, NM	March 6 th 5-7pm	Outside Co-op on Highbury Rd
Top Valley estate walkabout	Ward Members, NM	March 26 th 10am	Knights Close
Bulwell Forest North LAG	NM	March 26 th 6.30pm	Top Valley Community Centre
Ward Walk	NM and Ward Members	April 10 th 10am	To be confirmed
Leader Listens	Ward Members	April 15 th 6pm	Bulwell Riverside
Austin St area walkabout	Ward Members, NM	April 16 th 10am	Austin St flats
Bulwell Forest South Local Area Group	NM	April 18 th 6pm	St Albans Rd

Finance

Ward Councillor Budgets

Total Amount allocated this period £4904

Budget Remaining Unallocated £30,565 (inc of 2012-13 allocation)

Area Capital Fund

Total Amount allocated this period subject to committee approval £12,200

Budget Remaining Unallocated £3864 (inc of 2012-13 allocation)

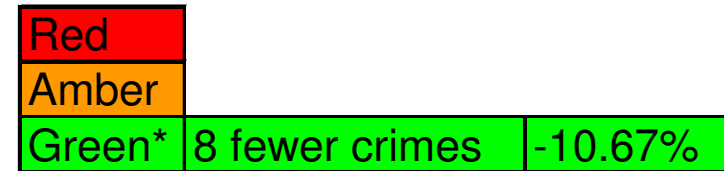
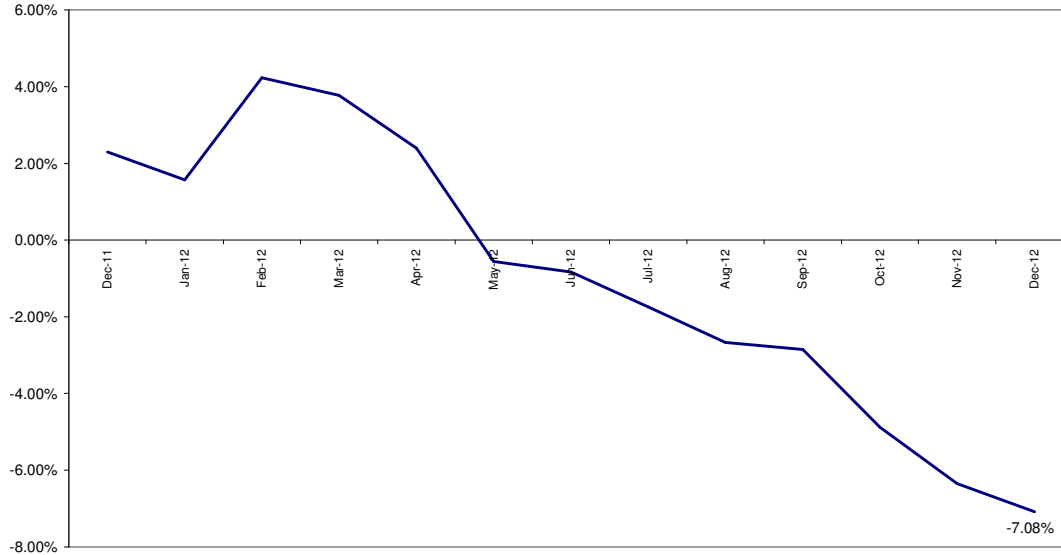
Others – Section 106, NCH Environmentals, Other Funding

Subject to committee approval, Section 106 - £81,705.

NCH Environmentals - £33003

Crime

All Crime in Bulwell Forest -
% Change over 2010/11 Baseline (Rolling 12 Month)

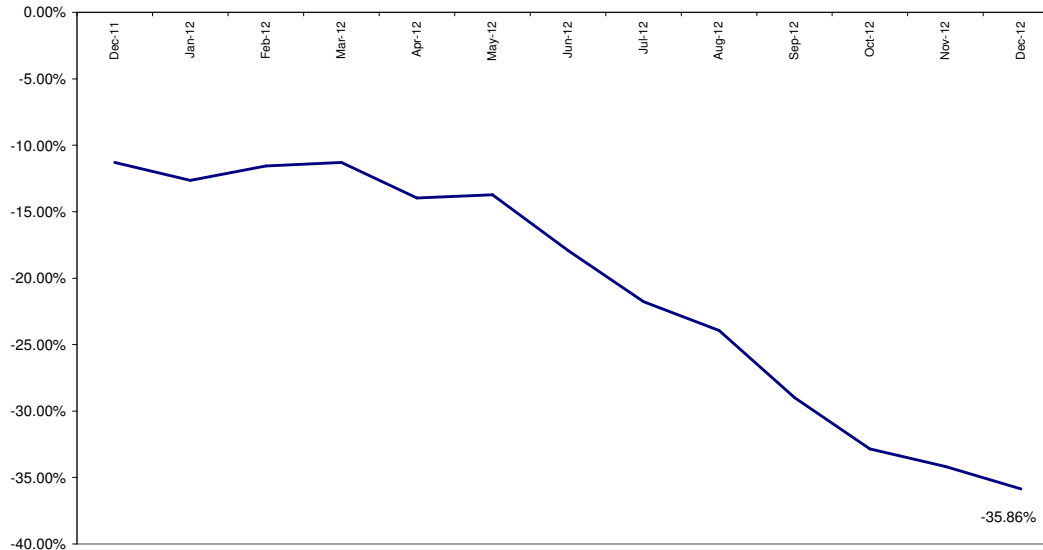


*Refers to December 2012 compared to December 2011

- In December 2012 (compared to December 2011) All Crime in Bulwell Forest was down by 10.67% (8 crimes, see above right RAG rating).
- The above left graph compares volume of crime in Bulwell Forest over the previous 12 months to a long term 2010/11 baseline. The graph highlights the steadily improving performance of the ward.
- Year to date (compared to the corresponding period last year) a reduction in All Crime of 14.5% has been observed.

All ASB

All ASB in Bulwell Forest -
% Change over 2010/11 Baseline (Rolling 12 Month)



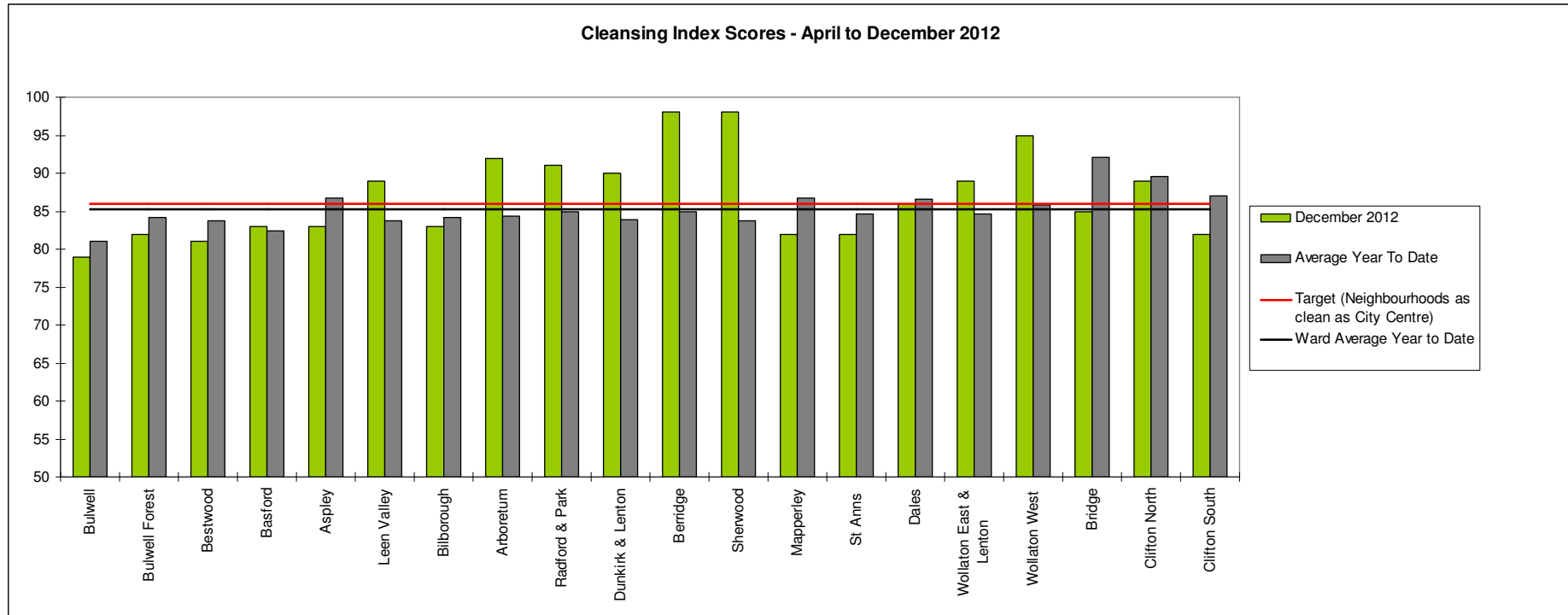
Red		
Amber		
Green*	14 fewer calls	-32.56%

*Refers to December 2012 compared to December 2011

- In December 2012 (compared to December 2011) All ASB in Bulwell Forest was down by 32.56% (14 calls, see above right RAG rating).
- The above left graph compares All ASB over the previous 12 months to a long term 2010/11 baseline. On this measure the performance of the ward has been steadily improving.
- Year to date (compared to the corresponding period last year) All ASB in the ward was down by 36.89%.

Cleanliness Index

This graph shows the position of your ward compared to other Wards



The “neighbourhood as clean as the city centre” benchmark target on cleanliness is to achieve a score of 86% in every ward. The 86% target is shown in red in the above graph.

To calculate the Cleanliness Index (CI) an agreed number of transects are surveyed across an area covering a range of land types. Each site surveyed is awarded a cleanliness grade based on a 7 point scale from A to D where Grade A: – no litter, and Grade D: - heavily littered. The maximum possible score of 100 is achieved when all sites achieve Grade A.

The Code of Practice for Litter and Refuse (COPLAR) requires councils to strive to reach an ‘acceptable’ standard of cleanliness (grade B or better) across the Council area. Grade A is the ultimate goal and is how a site should be immediately after sweeping but is almost impossible to maintain for any length of time. For example, a grade A site is completely free of litter – one cigarette butt takes it down to B+.

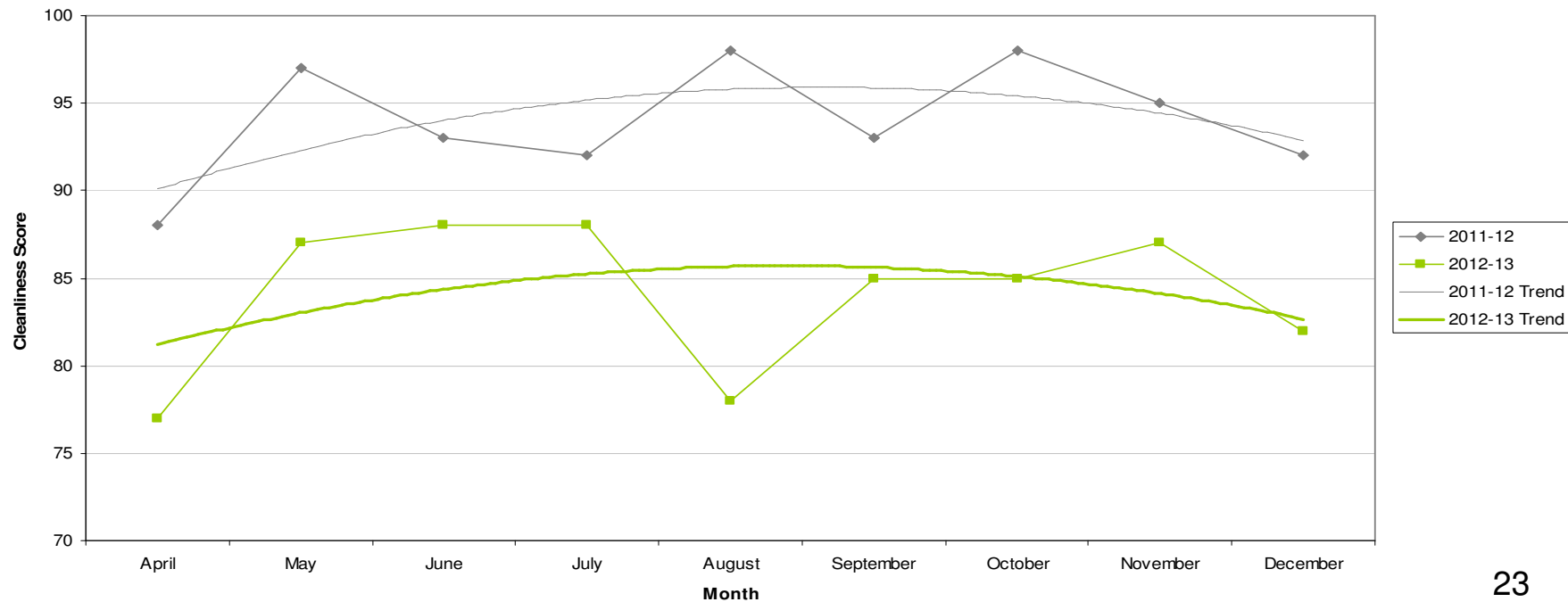
To achieve the manifesto commitment of Neighbourhoods as clean as the City Centre a target of 86 is required as that was the CI for the City Centre in May 2011. To give some context if all areas surveyed achieved a grade ‘B’ standard, this would equate to a cleanliness index of 67.

Cleanliness Index

Cleanliness Index Score	82
Performance compared to previous year	↓
Performance compared to neighbourhoods target of 86	↓

- All data refers to a comparison with the previous year's month
- It is proposed that performance over time graphs be used for each indicator
- Historic data for comparison is not available for dog fouling

Cleanliness Index

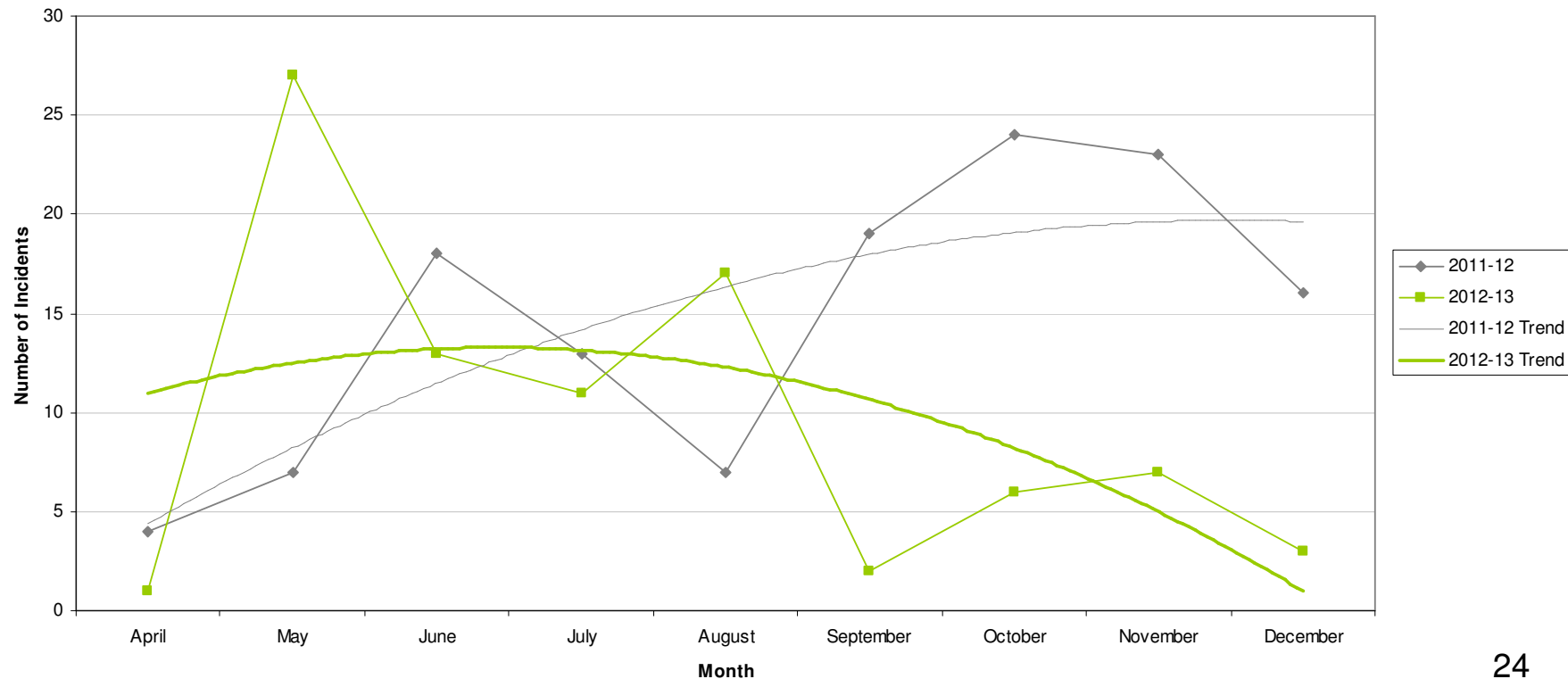


Graffiti Reports

RED		
AMBER		
GREEN	3 incidents	Decrease of 13

- All data refers to a comparison with the previous year's month
- It is proposed that performance over time graphs be used for each indicator
- Historic data for comparison is not available for dog fouling

Incidents of Graffiti

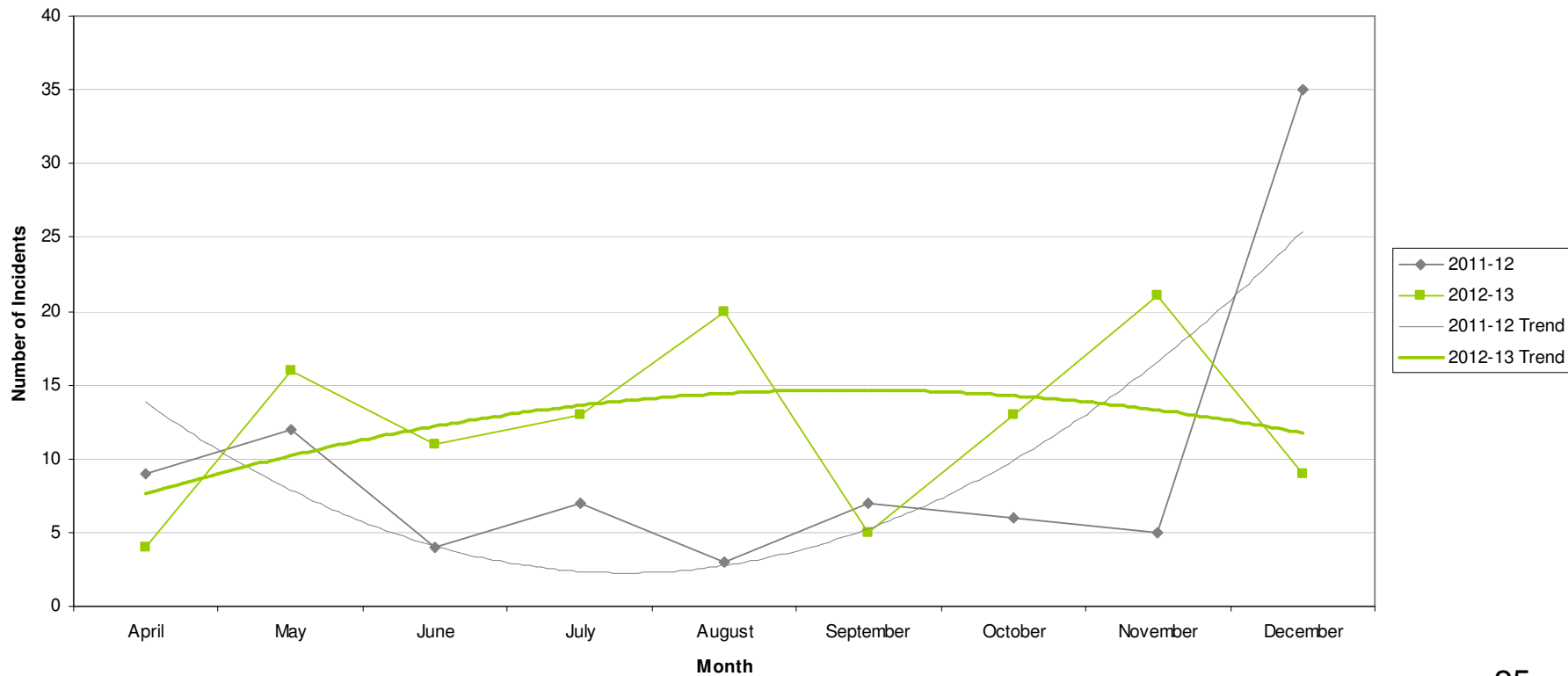


Fly Tipping

RED		
AMBER		
GREEN	9 incidents	Decrease of 26

- All data refers to a comparison with the previous year's month
- It is proposed that performance over time graphs be used for each indicator
- Historic data for comparison is not available for dog fouling

Incidents of Fly Tipping



Unemployment Rate

Area	Nov-12			Change in last		Change in last year	
	Number	Rate	City Rank	Number	%	Number	%
Berridge	1,030	7.1	7	-11	-1.1	67	7
Dunkirk and Lenton	253	2.3	19	-7	-2.7	-20	-7.3
Radford and Park	754	4	17	-14	-1.8	-13	-1.7
Sherwood	544	5.1	13	2	0.4	-66	-10.8
Wollaton East and Lenton Abbey	143	1.4	20	4	2.9	5	3.6
Wollaton West	248	2.7	18	-6	-2.4	10	4.2
Aspley	1,174	10.4	1	34	3	-13	-1.1
Basford	728	6.5	10	21	3	36	5.2
Bestwood	1,009	8.9	3	22	2.2	19	1.9
Bilborough	750	7.2	6	5	0.7	-25	-3.2
Bulwell	1,061	9.7	2	44	4.3	34	3.3
Bulwell Forest	410	4.5	15	-19	-4.4	-45	-9.9
Leen Valley	335	4.8	14	-18	-5.1	-11	-3.2
Bridge	696	6.6	9	-11	-1.6	-24	-3.3
Clifton North	378	4.3	16	-9	-2.3	-23	-5.7
Clifton South	524	6	12	17	3.4	11	2.1
Dales	863	7.4	5	-1	-0.1	22	2.6
Mapperley	703	6.3	11	1	0.1	-3	-0.4
St Ann's	1,195	8.7	4	-39	-3.2	8	0.7

This is an edited version of a report produced by: Geoff Oxendale, Information and Research Officer, Nottingham City Council

Housing

Bulwell Forest Ward - Housing



Anti-social behaviour - Bulwell (Bulwell Forest Ward)

Indicator	Current Target	2010/11	2011/12	2012/13		
		Value	Value	Value	Status	Trend
% of ASB cases resolved - Bulwell	97.6%	100%	97.74%	98.72%		
% of ASB cases resolved by first intervention - Bulwell	75%	-	-	81.82%		n/a

Empty properties - Bulwell Forest Ward

Indicator	Current Target	2010/11	2011/12	2012/13		
		Value	Value	Value	Status	Trend
Average void re-let time for Bulwell Forest Ward	26	34.96	13.5	20.54		
Lettable voids Bulwell Forest Ward	-	3	4	17		
Empty properties awaiting decommission in Bulwell Forest Ward	-	50	0	3		

Estate star ratings (from Tenant Service Inspectors)



Indicator	2010/11		2011/12		2012/13		
	Value	Status	Value	Status	Value	Status	Trend
Estate star rating - Old Highbury Vale	3 Star		3 Star		3 Star		
Estate star rating - New Highbury Vale	3 Star		3 Star		3 Star		

Data prepared by Nottingham City Homes Performance Team

For more information please contact Tricia Quinn, Performance Review Manager on 0115 9157365 or Marcus Parton, Performance Review Officer 0115 915715

Housing

Rent collection - Bulwell

Indicator	Current Target	2010/11	2011/12	2012/13		
		Value	Value	Value	Status	Trend
Rent charged that has been collected - Bulwell office area	100.2%	101.9%	101.5%	100%		

Key:



Performance on or exceeding target



Performance below target



Data only performance indicator



Performance has improved compared to two years ago

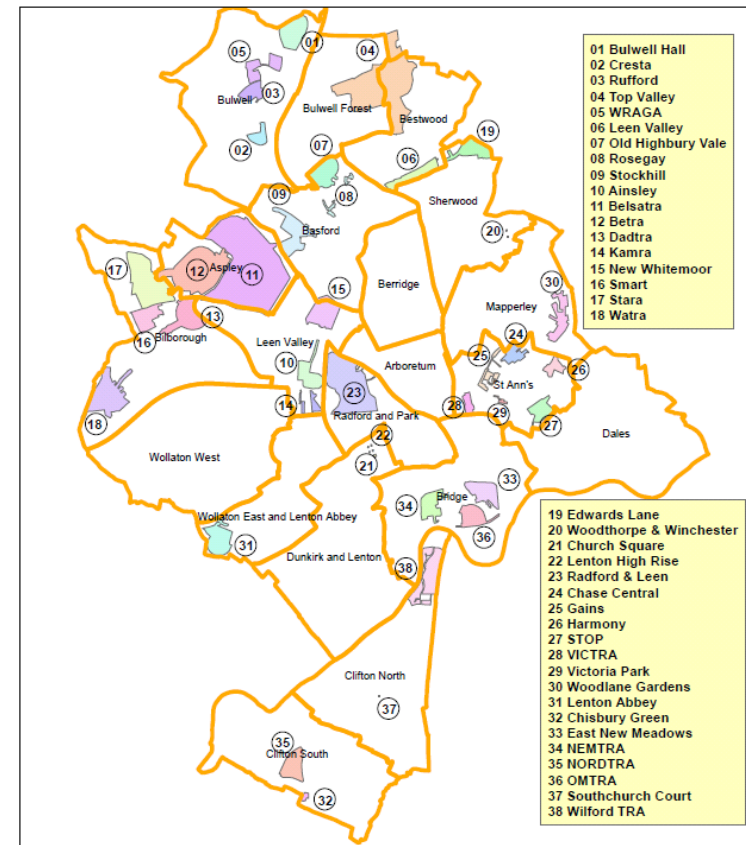


Performance has deteriorated compared to two years ago



Performance unchanged

Map of Tenants and Residents Associations by Ward



Data prepared by Nottingham City Homes Performance Team

For more information please contact Tricia Quinn, Performance Review Manager on 0115 9157365 or Marcus Parton, Performance Review Officer 0115 915715

Community Protection

In December 2012 there were two court outcomes. These comprised a suspended possession order and a statutory notice.

Data has been received from Community Protection and where postcodes have been listed these have been geo-coded and mapped to determine the Ward. All addresses relate to the address of the Perpetrator.

FPNs are not currently available at ward level.

Fire

Table: Fire Rate (per 1000 of population) by ward (previous 12 months)

Ward	All Fire		Property		Secondary		Rank
	Volume	Rate	Volume	Rate	Volume	Rate	
Arboretum	14	1.21	5	0.43	9	0.77	13
Aspley	68	3.90	13	0.75	55	3.16	2
Basford	62	3.84	12	0.74	50	3.10	3
Berridge	44	2.23	19	0.96	25	1.27	10
Bestwood	44	2.58	13	0.76	31	1.82	7
Bilborough	46	2.75	13	0.78	33	1.97	6
Bridge	37	3.63	6	0.59	31	3.04	4
Bulwell	91	5.51	25	1.51	66	4.00	1
Bulwell Forest	43	3.13	12	0.87	31	2.26	5
Clifton North	15	1.15	4	0.31	11	0.84	16
Clifton South	19	1.36	6	0.43	13	0.93	12
Dales	19	1.18	10	0.62	9	0.56	15
Dunkirk and Lenton	11	0.91	5	0.41	6	0.50	18
Leen Valley	25	2.30	3	0.28	22	2.02	9
Mapperley	16	1.06	8	0.53	8	0.53	17
Radford and Park	30	1.48	11	0.54	19	0.94	11
Sherwood	18	1.19	3	0.20	15	1.00	14
St. Ann's	31	2.40	9	0.70	22	1.70	8
Wollaton East and Lenton Abbey	8	0.69	1	0.09	7	0.61	19
Wollaton West	5	0.34	0	0.00	5	0.34	20
Average Rate (of 20 Wards)	2.14		0.57		1.57		

Key:

- Highest
- Second Highest
- Third Highest

Bulwell Forest ranks 5th highest out of the 20 wards for rate (per 1000 of population) of all intentional fire.

NB: Wards are ranked from 1 – 20 where 1 is the highest Rate and 20 is the lowest Rate.

Methodology

Data has not been audited or verified and therefore must only be used as a reflection of crime.

Crime Data and ASB calls have been extracted from the Police systems and mapped to ascertain which Ward they occurred in.

Where possible the most recent data is used, although for some areas this may be a month further in arrears.

Discussions continue with other agencies regarding what further data can be included.